

Get out your homework from yesterday and have it ready for me to check! Warm Up on the two problems below that can be found on page 12.

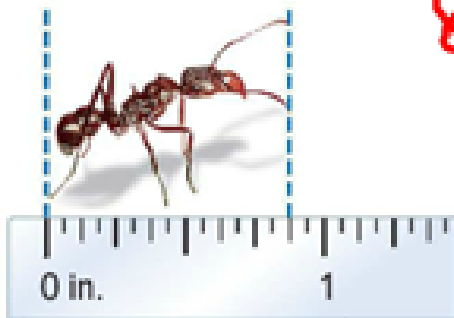
Classwork - Working on converting rational numbers

$$16 \overline{) 1.000} \begin{array}{r} 0.06 \\ \underline{1.00} \\ 0 \end{array}$$

Warm Up on p.12 in the book!

MP Be Precise Write the length of each insect as a fraction or mixed number and as a decimal.

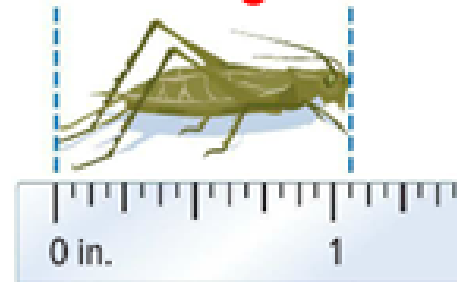
14.



$$8 \overline{) 7.000} \begin{array}{r} 0.875 \\ \underline{6} \\ 10 \\ \underline{8} \\ 20 \\ \underline{16} \\ 40 \\ \underline{40} \\ 0 \end{array}$$

$$\frac{14}{16} \div 2 = \frac{7}{8}$$

15.



$$1 \frac{1}{16}$$

$$1.0625$$

Answer Key

Write each fraction or mixed number as a decimal. SHOW WORK

1. $\frac{3}{5} = 0.6$

$$\frac{3 \cdot 2}{5 \cdot 2} = \frac{6}{10}$$

2. $\frac{5}{8} = 0.625$

3. $\frac{9}{20} = 0.45$

$$\frac{9 \cdot 5}{20 \cdot 5} = \frac{45}{100}$$

4. $\frac{37}{50} = 0.74$

$$\frac{37 \cdot 2}{50 \cdot 2} = \frac{74}{100}$$

5. $-\frac{11}{12} = -0.9\overline{16}$

6. $3\frac{1}{5} = 3.2$

$$\frac{1 \cdot 2}{5 \cdot 2} = \frac{2}{10}$$

Write each decimal as a fraction or mixed number in simplest form. SHOW WORK

$$7. -0.8 = -\frac{8}{10} = -\frac{4}{5}$$

$$8. 0.24 = \frac{24}{100} = \frac{6}{25}$$

$$9. -1.35 = -\frac{35}{100} = -\frac{7}{20}$$

$$10. 0.\overline{8}$$

$$\begin{array}{r} N = 0.\overline{8} \\ 10N = 8.\overline{8} \\ - N = -0.\overline{8} \\ \hline 9N = 8 \end{array}$$

$$\frac{9N}{9} = \frac{8}{9}$$

$$N = \frac{8}{9}$$

$$11. -1.\overline{5}$$

$$\begin{array}{r} N = 1.\overline{5} \\ 10N = 15.\overline{5} \\ - N = -1.\overline{5} \\ \hline 9N = 14 \end{array}$$

$$\frac{9N}{9} = \frac{14}{9}$$

$$N = \frac{14}{9} = 1\frac{5}{9}$$

$$12. 4.\overline{45}$$

$$\begin{array}{r} N = 4.\overline{45} \\ 100N = 445.\overline{45} \\ - N = -4.\overline{45} \\ \hline 99N = 441 \end{array}$$

$$\frac{99N}{99} = \frac{441}{99}$$

$$N = \frac{441}{99} = \frac{49}{11} = 4\frac{5}{11}$$

13. POPULATION Refer to the table at the right.

a. Express the fraction for Asian as a decimal.

0.02

b. Find the decimal equivalent for the fraction of the population that is African American.

0.16

c. Write the fraction for Hispanic as a decimal.

0.2

Population of Florida by Race	
Race	Fraction of Total Population
Asian	$\frac{1}{50}$
African American	$\frac{4}{25}$
Hispanic	$\frac{1}{5}$

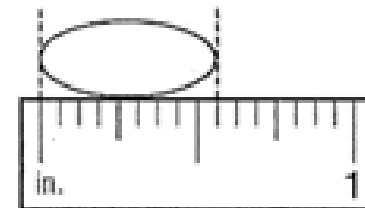
14. MEASUREMENTS Use the figure at the right.

a. Write the width of the jellybean as a fraction.

$\frac{9}{16}$ in

b. Write the width of the jellybean as a decimal.

0.5625 in



Reminder: There are ¹⁶~~8~~ dashes, so every dash is an of an inch. sorry!

Write each decimal as a fraction or mixed number in simplest form.

1) $0.\overline{8}$ $\left(\frac{8}{9}\right)$

$$N = 0.8\overline{8}$$

$$10N = 8.\overline{8}$$

$$\begin{array}{r} 10N = 8.\overline{8} \\ -1N = 0.\overline{8} \\ \hline 9N = 8 \end{array}$$

$$\frac{9N}{9} = \frac{8}{9}$$

2) $0.\overline{38}$ $\left(\frac{38}{99}\right)$

$$N = 0.38\overline{38}$$

$$100N = 38.\overline{38}$$

$$\begin{array}{r} 100N = 38.\overline{38} \\ -1N = 0.\overline{38} \\ \hline 99N = 38 \end{array}$$

$$\frac{99N}{99} = \frac{38}{99}$$

3) 2.8 $\left(2\frac{4}{5}\right)$

$$2\frac{8}{10} \div 2 = 2\frac{4}{5}$$

4) $2.\overline{15}$

$$N = 2.15\overline{15}$$

$$100N = 215.\overline{15}$$

$$\begin{array}{r} 100N = 215.\overline{15} \\ -1N = 2.\overline{15} \\ \hline 99N = 213 \end{array}$$

$$\frac{99N}{99} = \frac{213}{99}$$

5) ~~6.65~~

$$N = \frac{213}{99} = 2\frac{15}{99} \div 3 = 2\frac{5}{33}$$

6) 0.125

$$\frac{125}{1000} \div 125 = \frac{1}{8}$$